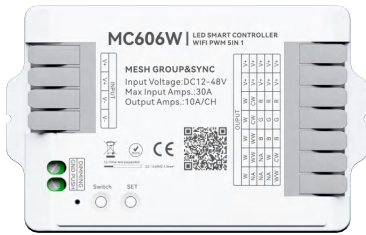
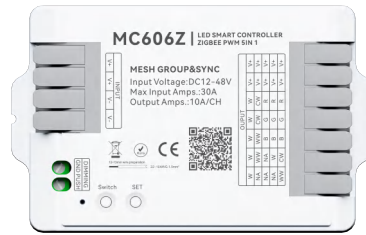


MC606X | PWM 5-IN-1 intelligent grouping Controller

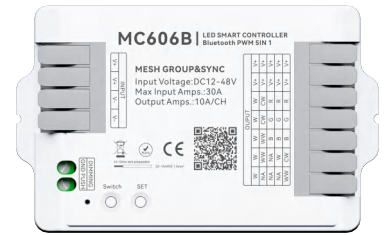
MC606X Controllers+MR series Remote Control Specification



MC606W-WIFI



MC606Z-Zigbee



MC606B-BLUETOOTH

Compatible remote control A single device can support 10 remote controls at the same time



MR10X Series



MR20X Series



MR011 DIM/CCR



MR333 RGB



MR02X Series



MR501-Human body sensor

Compatible voice assistant

Support language command switch, adjust brightness, and color.



小米小爱



小智管家



天猫精灵



百度小度



Amazon Alexa



Yandex Alice



Google Assistant

Local + remote control:

The MESH remote control realizes local physical button control (such as switching, group switching, and basic dimming) through MESH, which is suitable for the elderly, children, or quick operation.

The MSHE five-in-one controller supports remote APP control through Wi-Fi/BLUETOOTH/ZIGBEE gateway + Tuya ecology, can finely adjust the brightness and dynamic effects, and can be shared Equipment, create groups and other functions.

peculiarity

- MESH wireless transmission technology, stable signal and strong penetration.
- Each node has a signal relay function, which makes long-distance transmission more sensitive and consumes less power.
- Support matching multiple devices, multiple devices can be controlled at the same time, and one remote control can manage and synchronize up to 500 controllers. Each controller can be supported by 10 remote controls.(Control distance 30 meters)
- The brightness of the remote control can be adjusted according to personal preference, and the brightness and speed of the dynamic mode can be edited.
- The controller can adjust the brightness, color, voice control, select various dynamic or custom scenario modes, timing, countdown and other functions through the Tuya/Smart Life APP.
- Device click to run and automate, automatic transfer and synchronization function.
- PWM (Pulse Width Modulation) technology is adopted to ensure smooth light transition and avoid eye fatigue.
- Voice control, support Asia Alexa, Google Assistant, Tmall Genie, Xiaomi Xiaoai voice assistant and other speakers.
- Support multi-controller cascade, easily cover large-area lighting scenes such as shopping malls, theaters, building facades, etc.

Device parameters

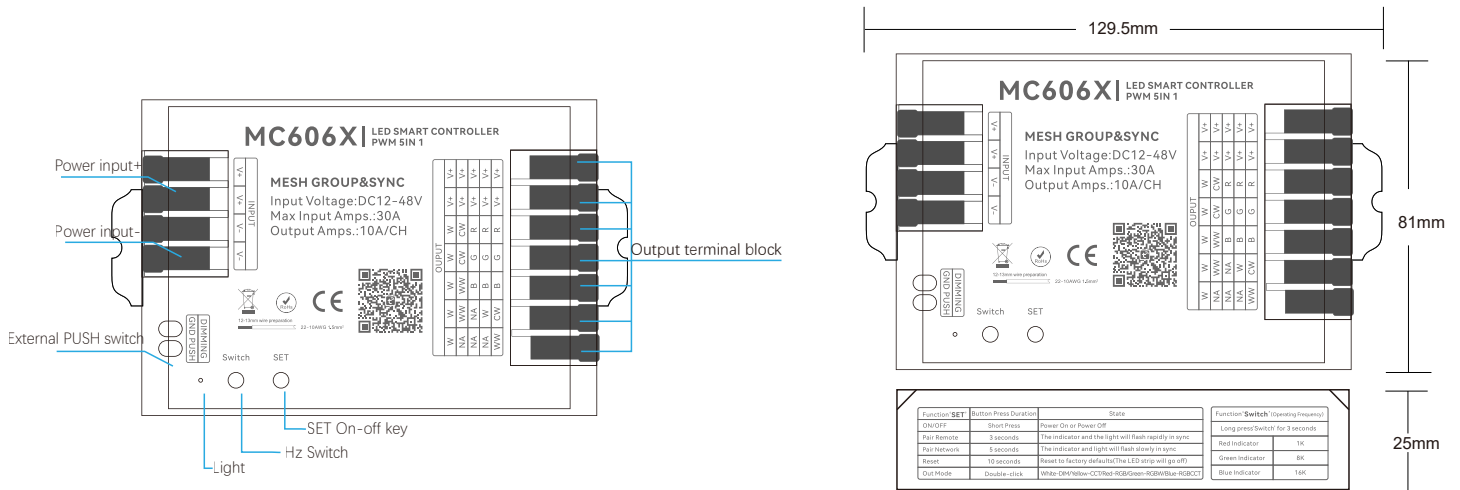
LED controllers

Input voltage	DC 12-48V
Input current	10/CH; 30A max
Access signal	MESH+WIFI/Bluetooth/Zigbee
Control the distance	30M
Size	L129.5XW81XH25mm
Authentication	CE,ROHS

Environment

Operating temperature	Ta:-20°C~+60°C
Maximum temperature of the case	Tc:+65°C
IP rating	IP20
Wrap	
Package size	L13.5XW9XH3cm/0.16kg
Box size (100 pcs)	L70XW15XH32cm/1.8kg

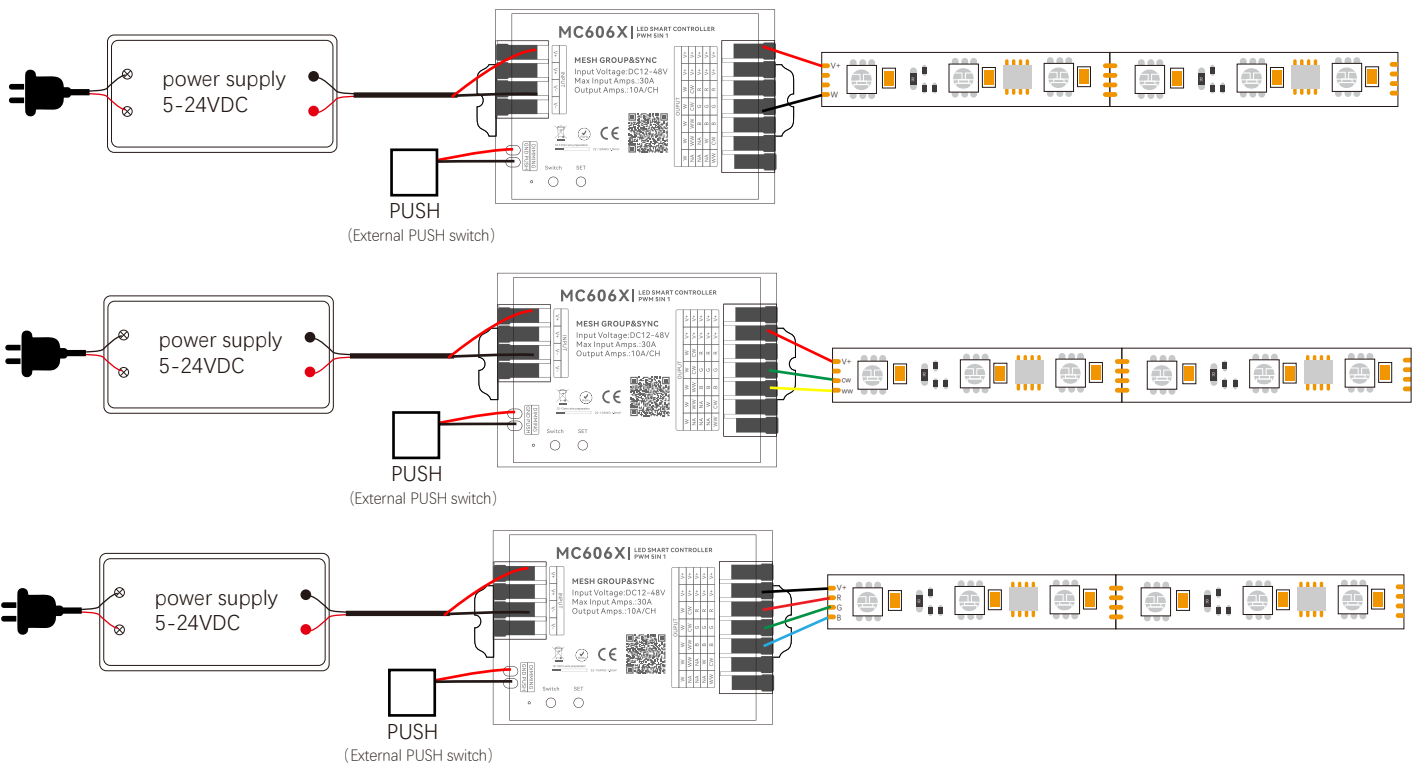
Equipment mechanism and installation

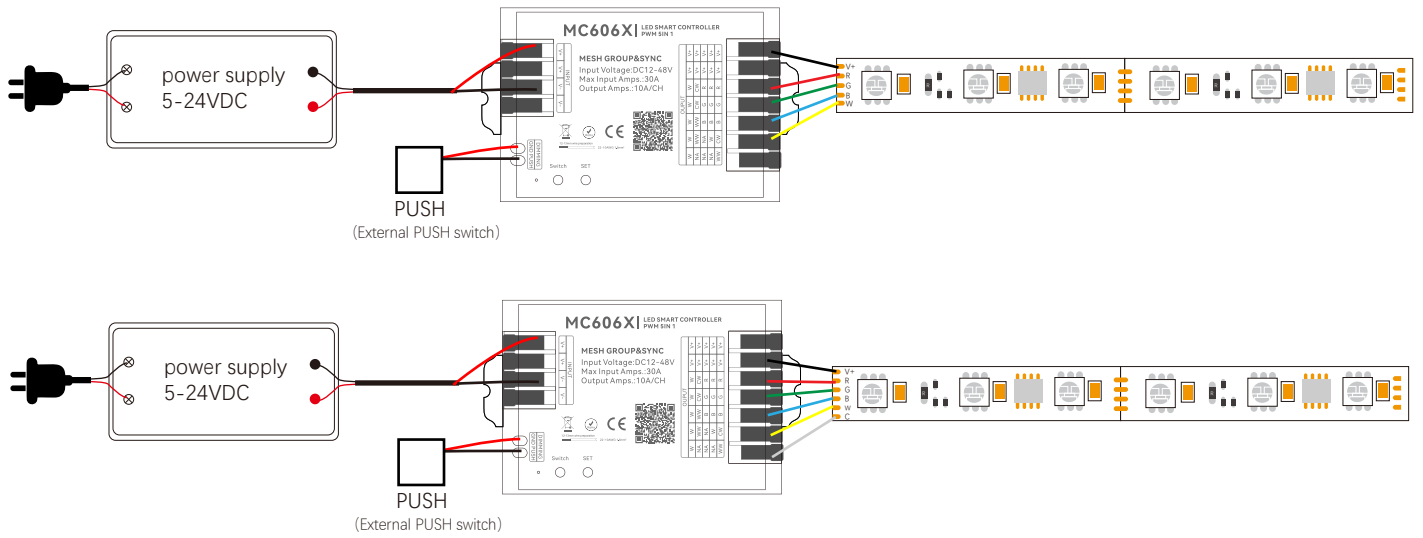


Wiring diagram of the device

Connect the strip light

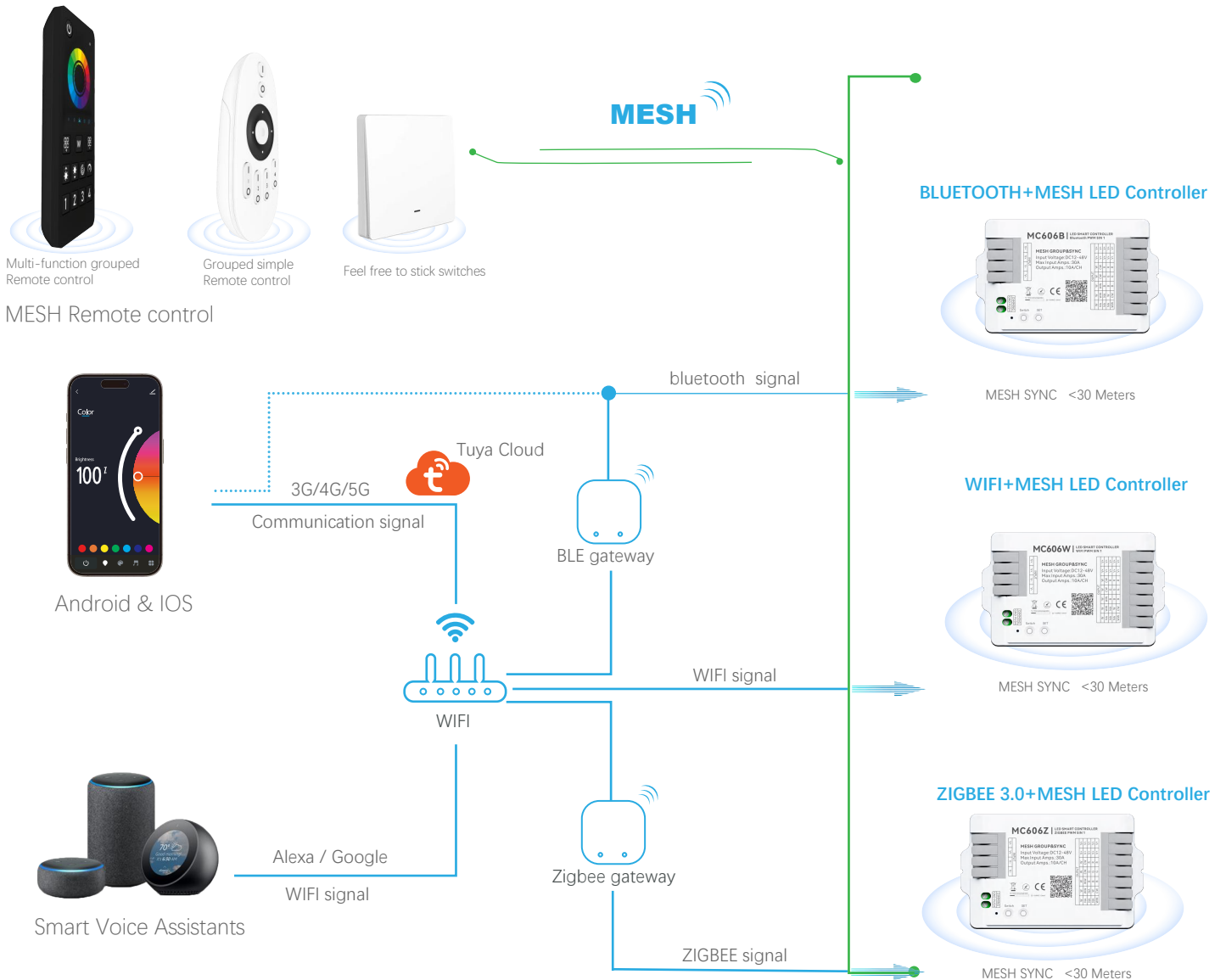
AC100-240V





Schematic diagram of the control connection

MESH wireless communication technology



Tuya smart download & APP network connection

1. Download and install the [Smart Life] or [Tuya Smart] APP

Search for [Tuya Smart] on Apple or Google Play or scan the QR code below to download and install the app.

Please click on the "Sign Up" button to create an account and use it for the first time, if you already have an account, log in directly.

Please download the corresponding Tuya/Smart Life APP according to your region.



Scan the QR code to download the APP

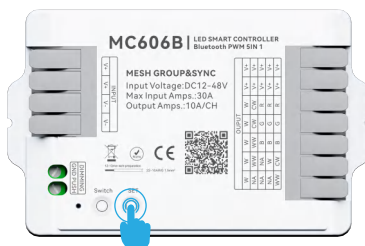


Smart Life APP



Tuya Smart APP

2. Product function description & reset the device

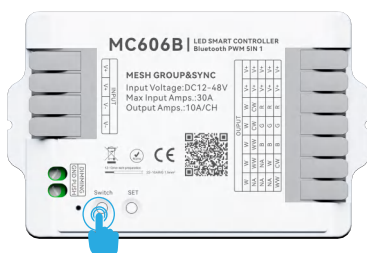


Double [SET] click to switch output mode		
Indicator color	White	DIM
	Yellow	CCT
	Red	RGB
	Green	RGBW
	Blue	RGBCCT



Control Method 1: 'SET'Button	Control Method 2: Power Off	Indicator light status	Next steps	Functional Result
Short press (release within 1 second)	Not supported	No special flicker	No additional action required	Switch device power on/off status
Press and hold for 3 seconds, then release	3 times	Rapid flicker	Press any group button on the remote control	Complete the pairing of the remote control with the corresponding group
Press and hold for 5 seconds, then release.	5 times	Slow blinking	Operate network settings on the mobile app	Complete the device network configuration and connect to the mobile app
Press and hold for 10 seconds, then release.	10 times	Rapid flicker	No additional action required	Device reset, clear WiFi network information and remote control pairing

2-1.Adjust the controller frequency



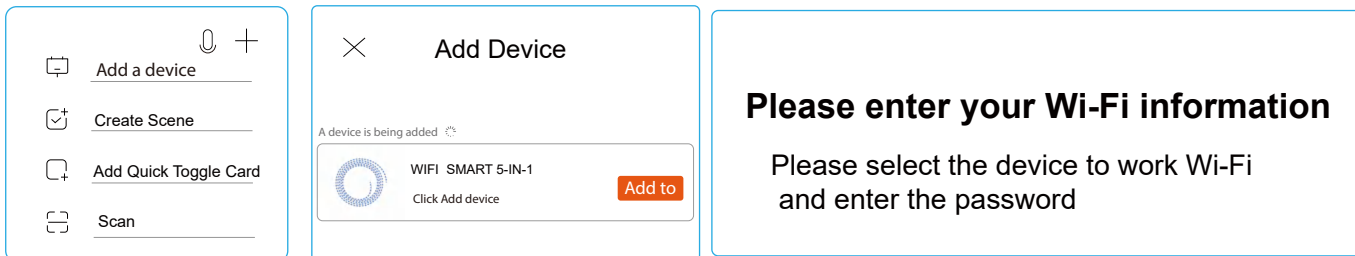
Function 'Switch' (Operating Frequency)	
Long press 'Switch' for 3 seconds	
Red Indicator	1K
Green Indicator	8K
Blue Indicator	16K

3. Connect to your smartphone

MC606W Connection process

1. Make sure your smartphone is working under a WLAN network.
2. Open the login APP, press and hold "SET" to add a device, if it is not found, please click "+" in the upper right corner, and then manually select "Add Device", when adding, you need to enter the WiFi password of your smartphone connection, and wait for 5-10 seconds to complete the connection after successfully entering
3. Once the connection is successful, the new device will be displayed on the home page, then tap on the device and enter the control interface to do more

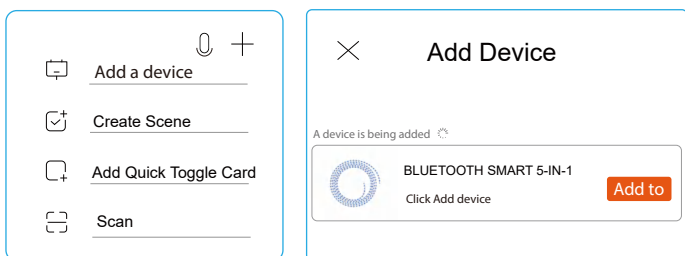
Follow these steps to complete the connection:



MC606B Connection process

1. Make sure your smartphone is working under a WLAN network.
2. Open the login APP, press and hold "SET" to add a device, if you don't find it, please click " + " in the upper right corner, then manually select "Add Device", wait for 5-10 seconds to complete the connection.
3. Once the connection is successful, the new device will be displayed on the home page, then tap on the device and enter the control interface to do more

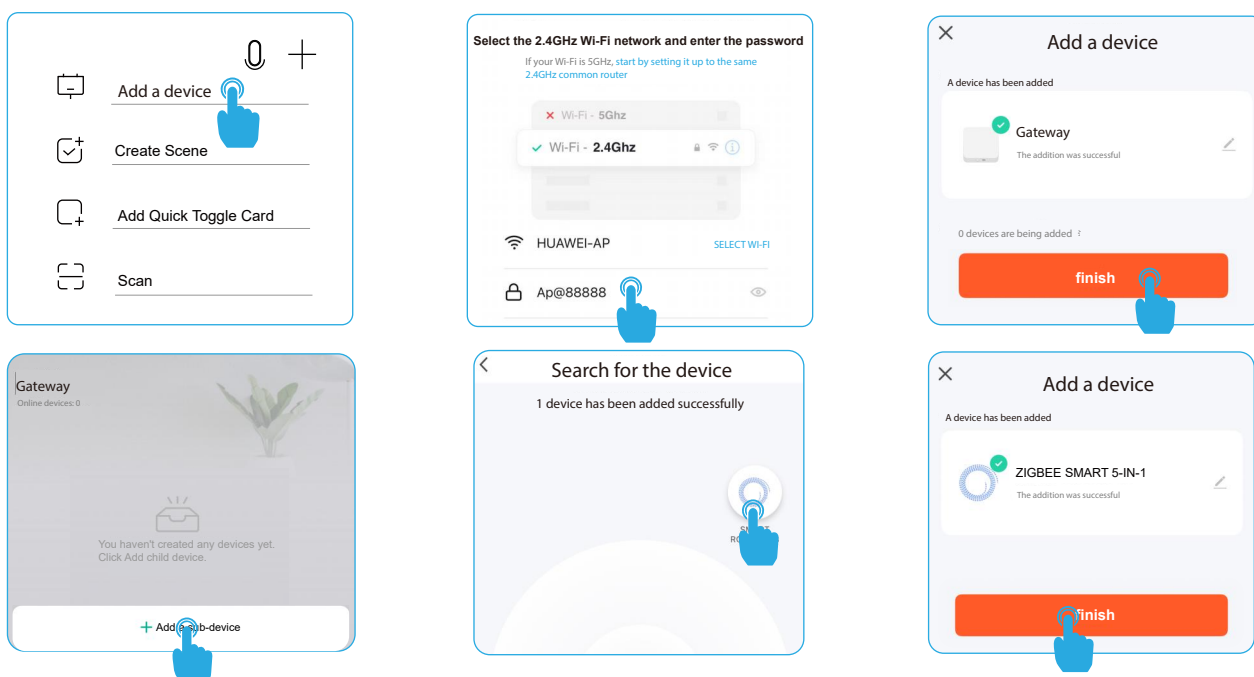
Follow these steps to complete the connection:



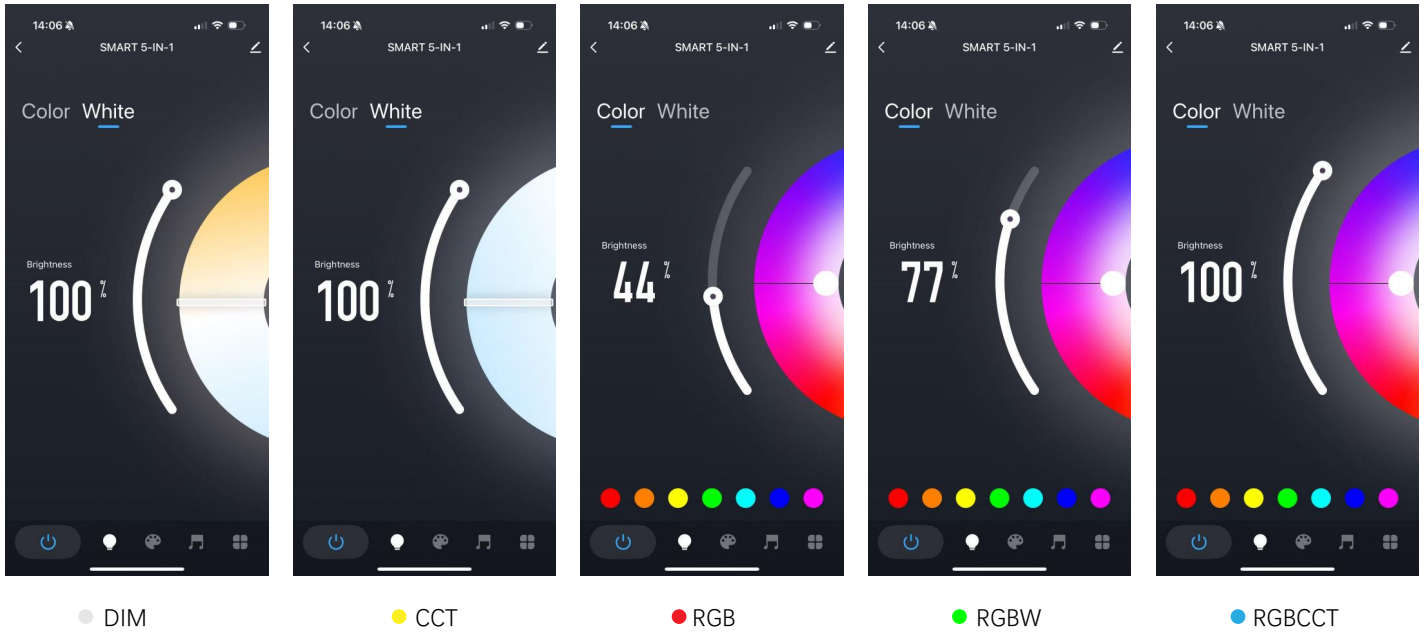
MC606Z connection to TUYA APP process

1. Make sure your smartphone is working under a WLAN network.
2. Open the Tuya APP, select Manually Add Gateway Central Control, select Zigbee Gateway, and enter the WIFI password to connect (Incorrect WIFI password will cause the connection to fail, non-2.4G network WIFI also.) will cause the connection to fail)
3. Reset the Zigbee gateway device, the red and blue lights of the Zigbee gateway are always on, turn on the power supply, please confirm that the red light is flashing, the blue light is always on, and the red light is always on after the connection is successful.
4. Click Done to enter the gateway control interface, add sub-devices, and confirm that the sub-devices belong to the network configuration mode (please place the gateway, controller, and smartphone close to each other for quick speed.) Pairing identification) long press the controller "SET" for 5 seconds, after the connection is successful, the sub-device will be displayed on the home page, then tap the device and enter the control interface to do more.
5. After the controller is installed in the APP, we can easily control the LED lighting with the APP.

Follow these steps to complete the connection:



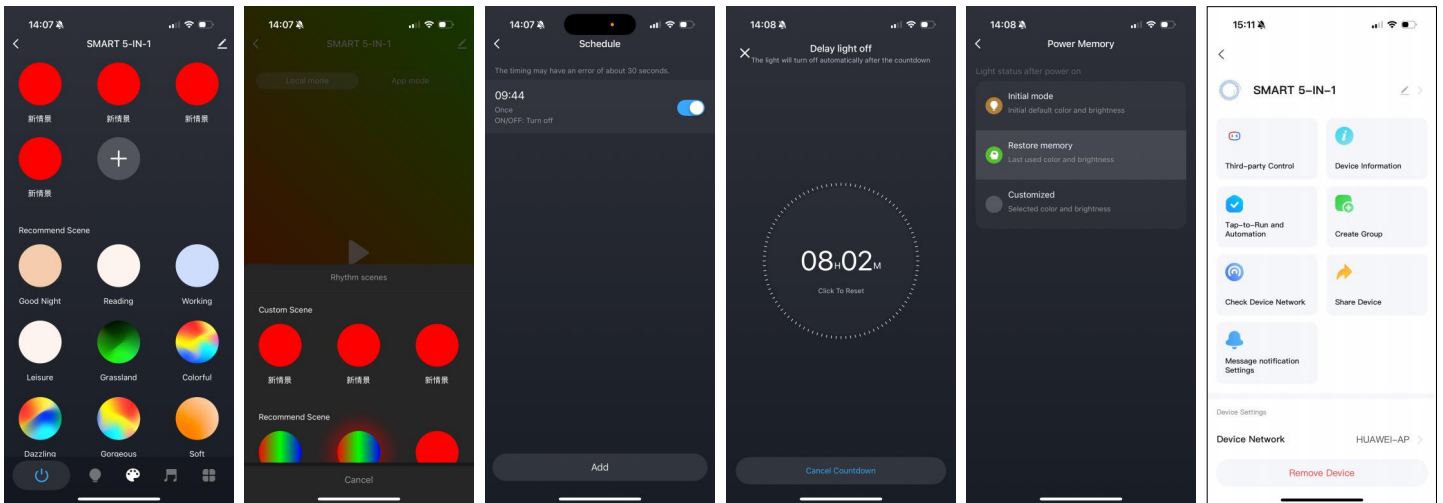
Introduction to the functions of the APP interface



DIM/CCT/RGB/RGBW/RGBWC Status Interface: You can set the color and brightness of the light, and you can quickly color it with one click.

After the controller is connected to the TUYA APP, double-click the "SET" button to switch the APP status.

Note: The TUYA APP will automatically switch the corresponding status according to the color of the indicator light, and the status interface without the corresponding indicator will not be able to operate.



Scenario mode

Music mode

Timing

Countdown

Power-off mode

Set up

Scenario mode: 32 recommended scenario modes and 10 customized; Customize the static, jumping, breathing, color brightness, and change speed of the scene, a total of 10 scenes can be customized.

Music mode: It is divided into local mode and APP mode; The local mode can adjust the sensitivity, 5 recommended scenes, and can be customized to add groove scenes, a total of 3 custom groove scenes can be added. The APP mode is not adjustable, and the phone needs to be turned on. The microphone detects the music.

Timing: Customize multiple times to perform on/off light actions;

Countdown: Define the countdown time to perform the on/off light action, and the light will automatically turn off when the countdown ends.

Power-off mode: The energizing reaction can set the state of the light after the energizing is applied

Set up: This interface can be bound with third-party language control, one-click execution and automation, group creation, device sharing and other functions

Safety Precautions

1. The remote control is a precision electronic product, please do not use it in a humid or high temperature environment for a long time. If not in use for a long time, remove the battery and store it in a cool, dry place.
2. Do not use this device in a large area of metal or in an environment with strong electromagnetic waves nearby, otherwise it will seriously affect the control distance
3. Please check whether the input voltage of the constant voltage power supply meets the requirements of the controller, and check whether the connection of the cathode and anode is correct.
4. The working voltage is DC 12~48V, if the voltage is higher than 48V, the controller will be damaged.
5. Non-professional users cannot directly disassemble the controller, otherwise it may cause fire and electric shock.
6. The working temperature (Ta) is -20~60°C; Do not use the device in direct sunlight, humidity, or other high-temperature areas.
7. When the equipment load reaches 15A, the wire diameter must be more than 1.5 square millimeters
8. When the device load exceeds 10A, the connection cable from the DC port to the LED strip must be shorter than 40cm.
9. Please install the device in a good heat dissipation area.