



C-206 Series 5-in-1 Controller MESH Series Remote

MESH/BLUETOOTH/WIFI/ZIGBEECONTROLLER DIM/CCT/RGB/RGBW/RGBWC REMOTE CONTROL SET



C-206A/2.4G **MESH**



C-206W/WIFI



C-206B/BLUETOOTH



C-206Z/ZIGBEE **zigbee**

Compatible remote controls A single device can support 10 remote controls at the same time



R-101/DIM



R-102S/CCT



R-102/CCT



R-103/RGB



R-104/RGBW



R-105/RGBCCT



R-011/DIM



R-023/3 WAY

Compatible voice assistants

Support language command switch, brightness, color.



Amazon Alexa



Yandex Alice



Google Assistant



已接入米家
works with
mijia



小米小爱



小智管家



天猫精灵



百度小度

MESH 5-in-1 LED Controller is our newly developed LED controller series. Can be used with a MESH remote control. The controller has automatic transmission and automatic synchronization functions, and has five output modes in one: brightness, CCT, RGB, RGBW, and RGB CCT. The controller adopts the widely used MESH wireless technology, which has the characteristics of low power consumption, stable signal transmission and strong anti-interference.

Local Remote Control:

MESH remote control realizes local physical key control (such as switching, group switching, basic dimming) through MESH, which is suitable for the elderly, children or quick operation.

The 5-in-1 controller supports remote APP control via WIFI/Bluetooth/ZIGBEE Tuya ecology, which can finely adjust the brightness, color, and dynamic effects, and can share devices, create groups and other functions.

peculiarity

- MESH wireless transmission technology, stable signal and strong penetration.
- It supports matching multiple devices, and can control multiple devices at the same time, and one remote control can manage and synchronize up to 500 controllers. Each controller can be supported by 10 remote controls.(Control distance 30 meters)
- The brightness, color temperature, and color of the remote control can be adjusted according to personal preferences, and the brightness and speed of dynamic mode can be edited.
- The controller can adjust the brightness, color temperature, color, voice control, select various dynamic or custom scenario modes, timing, countdown and other functions through the Tuya/Smart Life APP.
- Device click-to-run and automated, automatic transfer and synchronization functions.
- PWM (Pulse Width Modulation) technology ensures smooth light transitions to avoid eye fatigue.
- Voice control, Support Asia Alexa、Google Assistant、Tmall Genie、Xiaomi Xiaoai voice assistant and other speakers。
- It supports multi-controller cascade and easily covers large-area lighting scenarios such as shopping malls, theaters, and building facades.

Device parameters

LED controllers

Input voltage	DC 5-24V
Input current	6/CH; 15A max
Access signal	MESH
Control the distance	30M

Size	L113XW39XH20mm
Authentication	CE,ROHS

Environment

Operating temperature	Ta:-20°C~+60°C
Maximum temperature of the case	Tc:+65°C
IP rating	IP20

Wrap

Package size	L11.6XW4.55XH2.45cm/0.06kg
Box size (100 pcs)	L42.5XW26.5XH17cm/6kg

LED remote control

voltage	3V(AAA*2PCS)
Operating current	10mW
Transmission frequency	MESH (2.4GHz)
Transmit power	6dBm

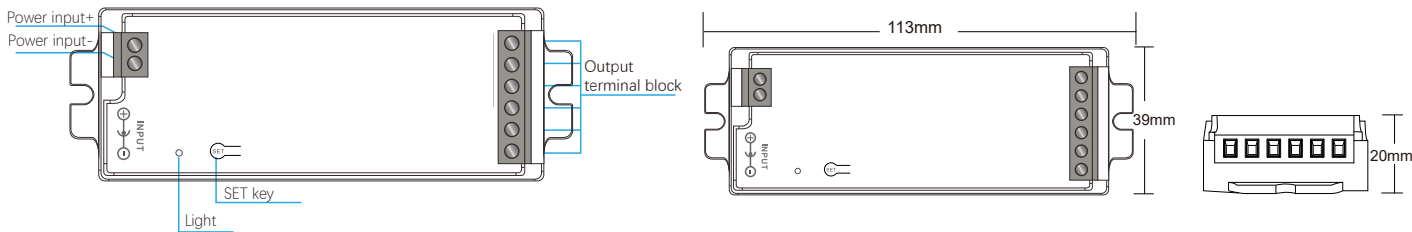
Color temperature range	2700K-6500K
Dimming range	1-100% Infinitely dimming
Remote control distance	30M

Size	L122XW53XH21mm
Operating temperature	Ta:-20°C~+60°C
Authentication	CE,ROHS

Wrap

Package size	L13XW5.8XH2.7cm/0.105kg
Box size (100 pcs)	L27XW30XH15cm/11kg

Equipment mechanism and installation

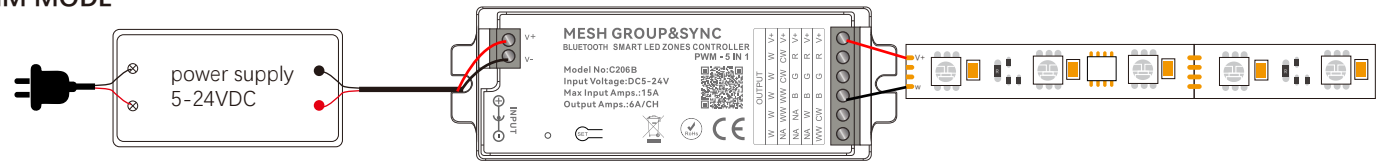


Wiring diagram of the device

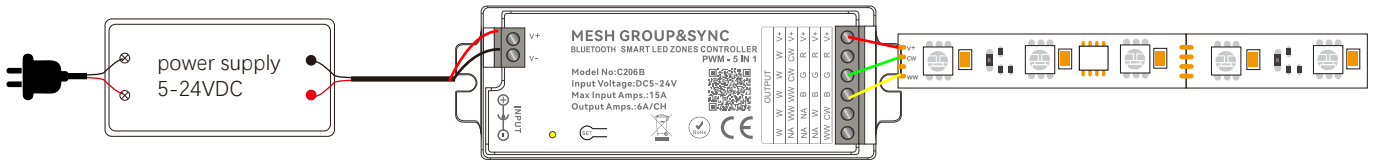
Connect the strip light

AC100-240V

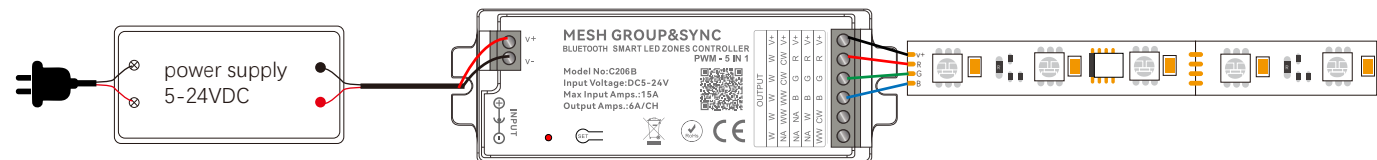
DIM MODE



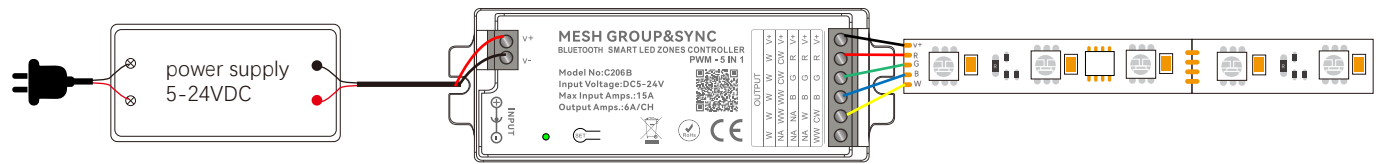
CCT MODE



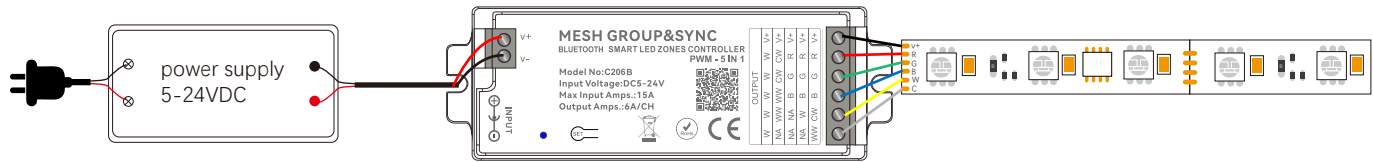
RGB MODE



RGBW MODE

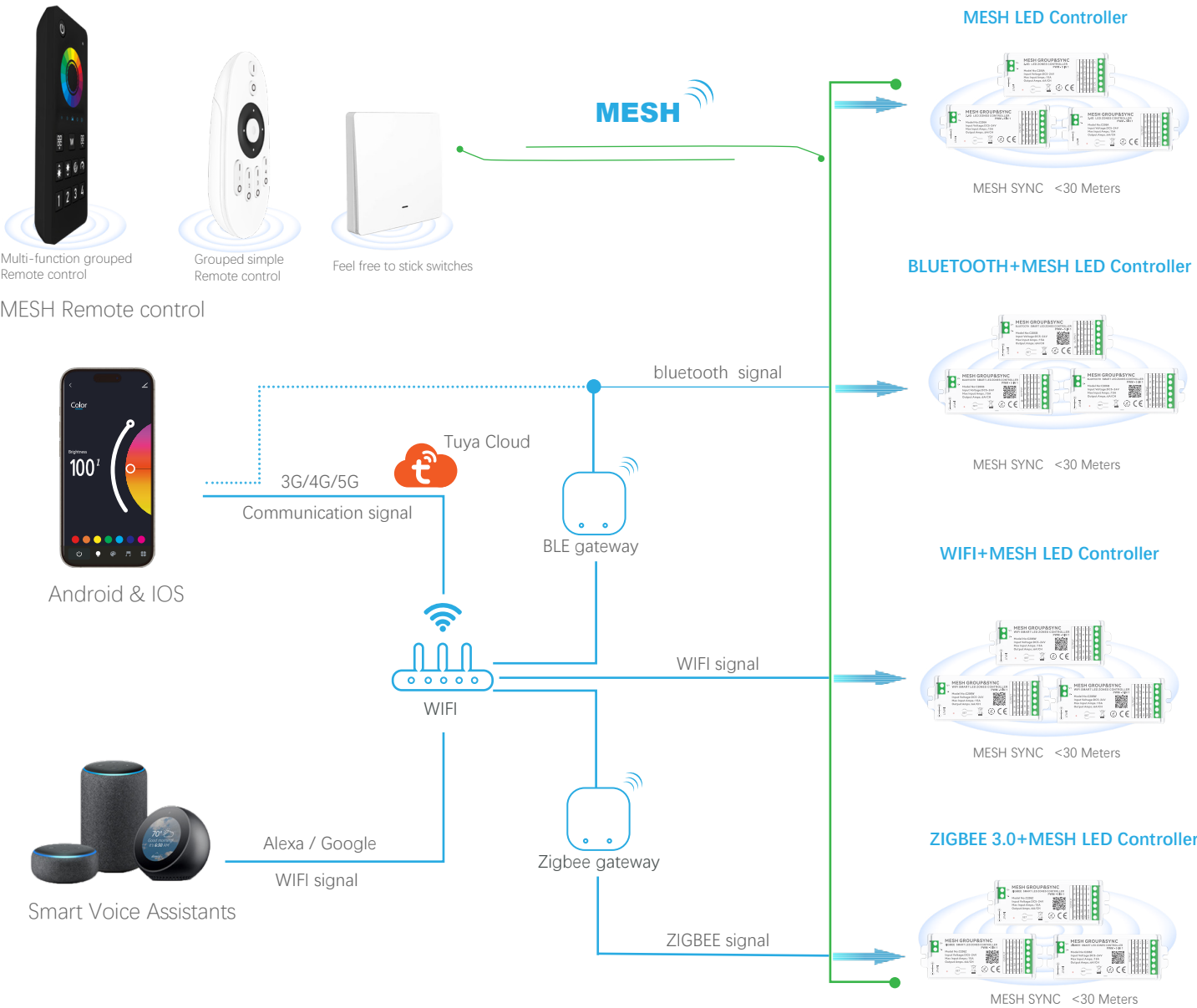


RGBWC MODE



Schematic diagram of the control connection

MESH wireless communication technology



Tuya smart download & APP network connection (C-206A/2.4G You can't connect to the app)

1. Download and install the [Smart Life] or [Tuya Smart] APP

Search for [Tuya Smart] on Apple or Google Play or scan the QR code below to download and install the app.

Please click on the "Sign Up" button to create an account and use it for the first time, if you already have an account, log in directly.

Please download the corresponding Tuya/Smart Life APP according to your region.



Scan the QR code to download the APP







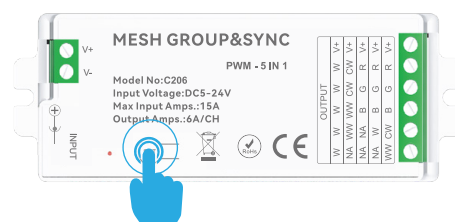
Smart Life APP



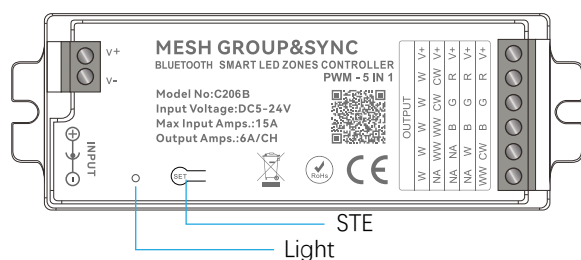
Tuya Smart APP

2. Product function description & reset the device

function		Button mode	Power-off mode
 'SET' key	ON/OFF	Short press (release within 1s)	N/A
 MESH Remote Control	The remote control is paired	Press (3S) The indicator light flashes quickly	3 Times
 Android & IOS	WiFi Connect	Press (5S) The indicator flashes slowly	5 Times
	Clean up and reset	Press and hold (10S) to The controller indicator flashes quickly	10 Times



2.1 Product type switching settings



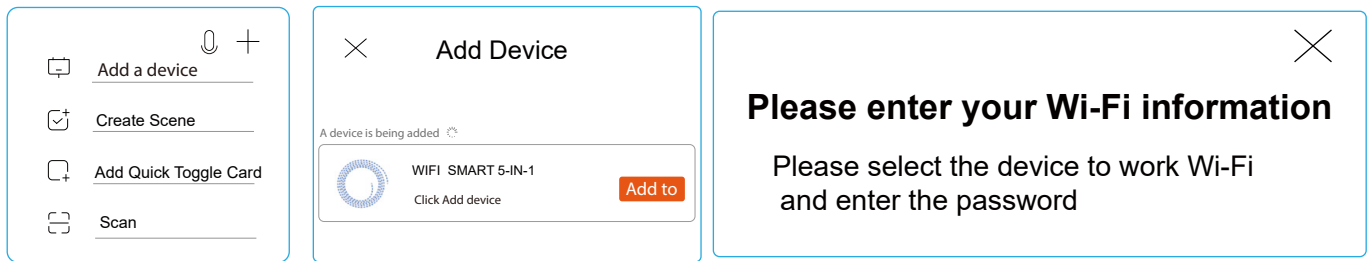
- Double-click the "SET" button on the controller to switch states
 - The indicator light is white to indicate the DIM status
 - The indicator light is yellow to indicate the CCT status
 - The indicator is red: RGB status
 - The indicator is green: RGBW status
 - Indicator blue light: RGBCCT status

3. Connect to your smartphone

C-206W connection to TUYA APP process

1. Make sure your smartphone is working under a WLAN network.
2. Open the login APP, press and hold "SET" to add a device, if it is not found, please click "+" in the upper right corner, and then manually select "Add Device", when adding, you need to enter the WiFi password of your smartphone connection, and wait for 5-10 seconds to complete the connection after successfully entering
3. Once the connection is successful, the new device will be displayed on the home page, then tap on the device and enter the control interface to do more

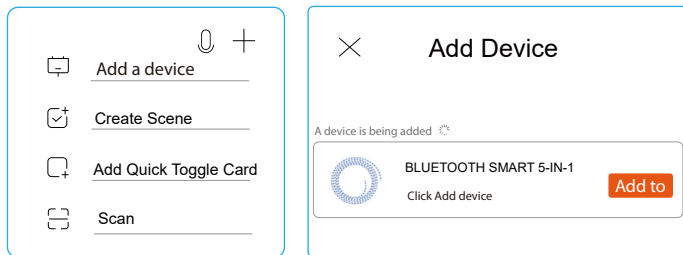
Follow these steps to complete the connection:



C-206B Connection TUYA APP process

1. Make sure your smartphone is working under a WLAN network.
2. Open the login APP, press and hold "SET" to add a device, if you don't find it, please click " + " in the upper right corner, then manually select "Add Device", wait for 5-10 seconds to complete the connection.
3. Once the connection is successful, the new device will be displayed on the home page, then tap on the device and enter the control interface to do more

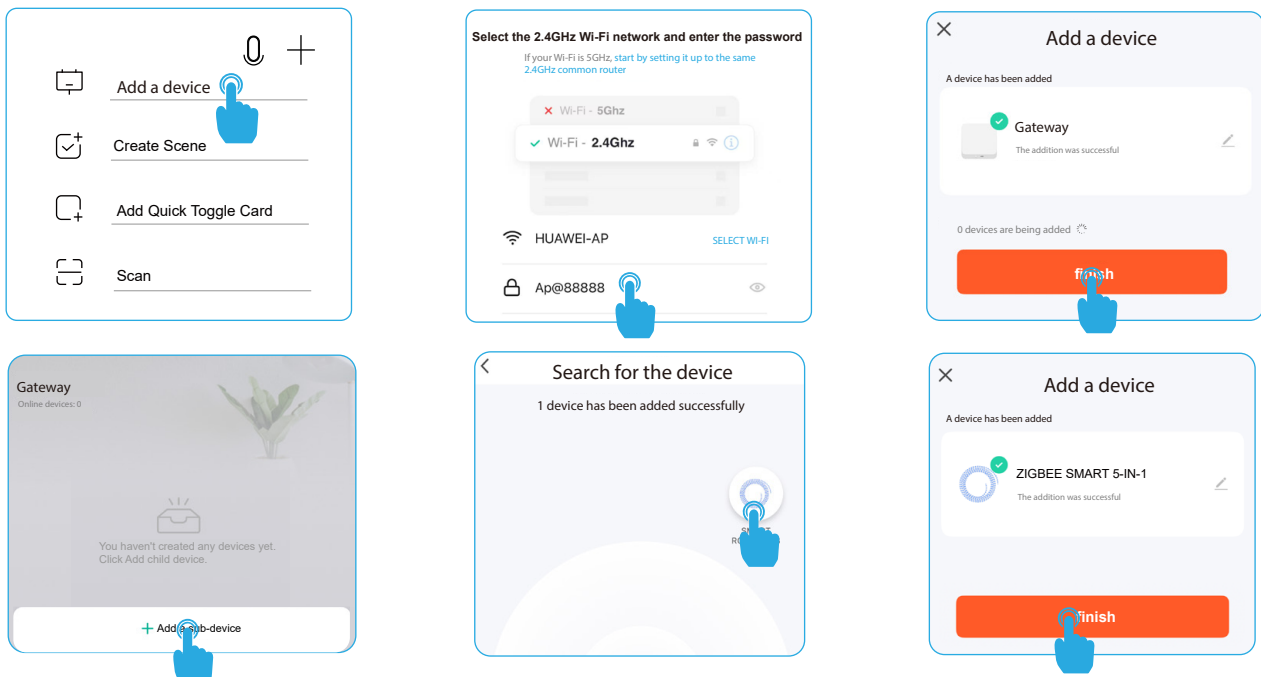
Follow these steps to complete the connection:



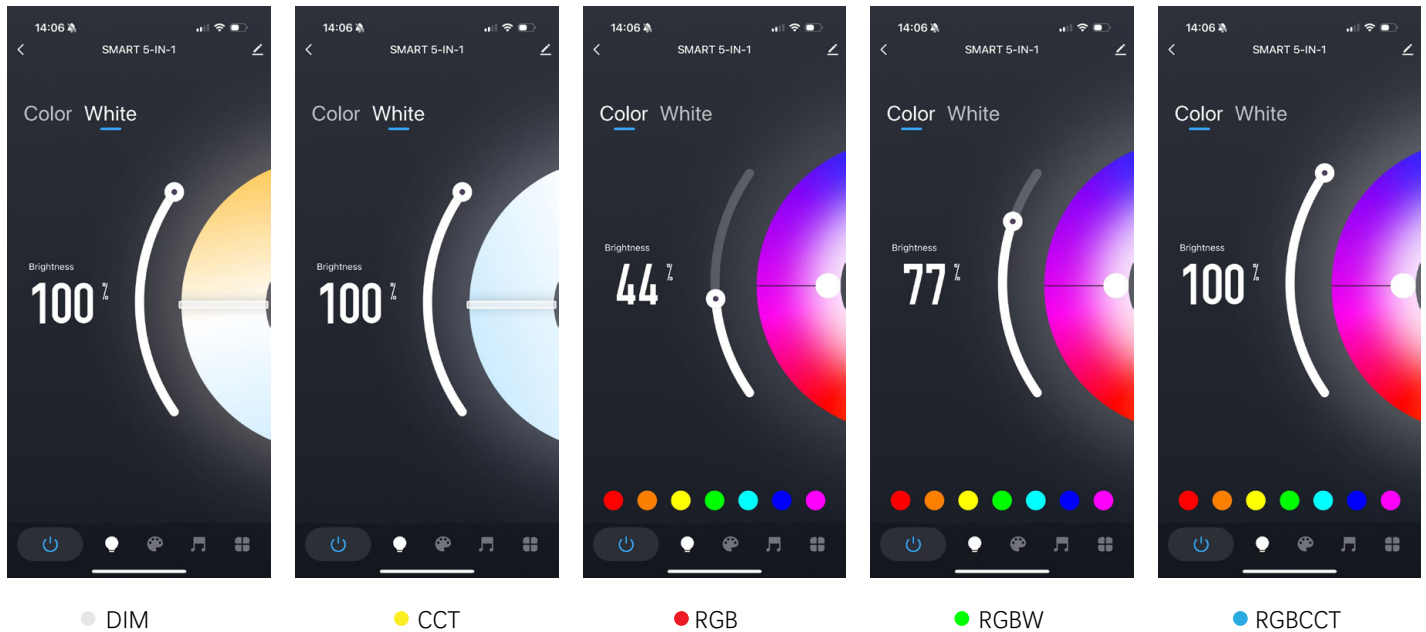
C-206Z connection to TUYA APP process

1. Make sure your smartphone is working under a WLAN network.
2. Open the Tuya APP, select Manually Add Gateway Central Control, select Zigbee Gateway, and enter the WIFI password to connect (Incorrect WIFI password will cause the connection to fail, non-2.4G network WIFI also.) will cause the connection to fail)
3. Reset the Zigbee gateway device, the red and blue lights of the Zigbee gateway are always on, turn on the power supply, please confirm that the red light is flashing, the blue light is always on, and the red light is always on after the connection is successful.
4. Click Done to enter the gateway control interface, add sub-devices, and confirm that the sub-devices belong to the network configuration mode (please place the gateway, controller, and smartphone close to each other for quick speed.) Pairing identification) long press the controller "SET" for 5 seconds, after the connection is successful, the sub-device will be displayed on the home page, then tap the device and enter the control interface to do more.
5. After the controller is installed in the APP, we can easily control the LED lighting with the APP.

Follow these steps to complete the connection:



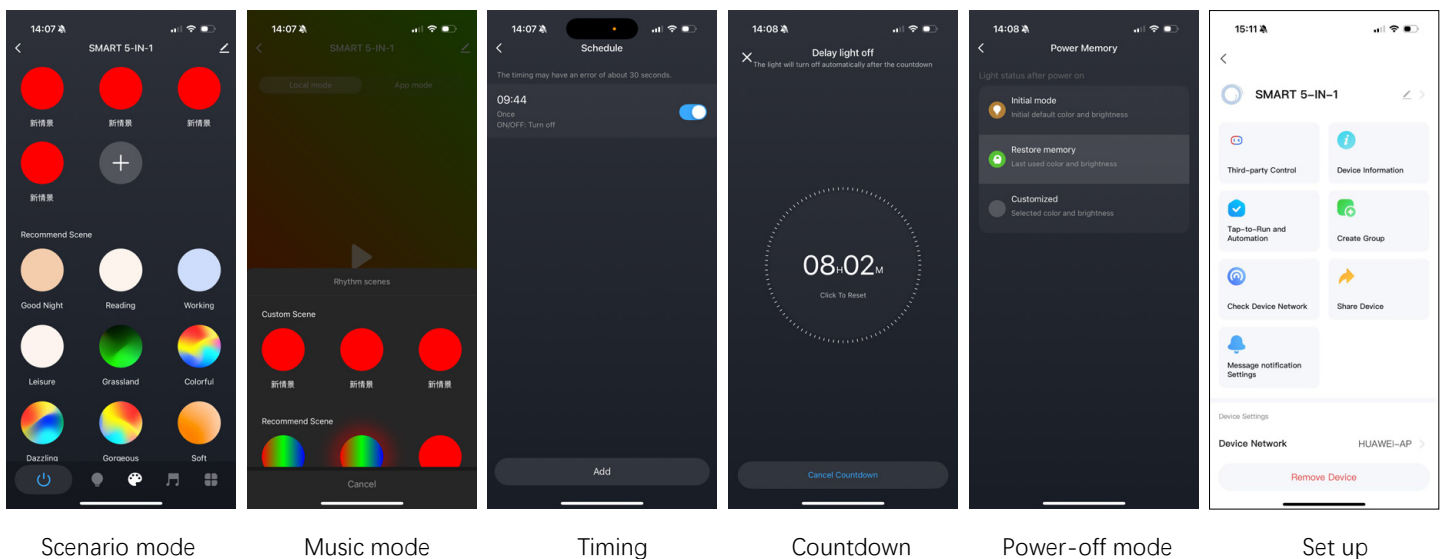
Introduction to the functions of the APP interface



DIM/CCT/RGB/RGBW/RGBWC Status Interface: You can set the color and brightness of the light, and you can quickly color it with one click.

After the controller is connected to the TUYA APP, double-click the "SET" button to switch the APP status.

Note: The TUYA APP will automatically switch the corresponding status according to the color of the indicator light, and the status interface without the corresponding indicator will not be able to operate.



Scenario mode: 32 recommended scenario modes and 10 customized; Customize the static, jumping, breathing, color brightness, and change speed of the scene, a total of 10 scenes can be customized.

Music mode: It is divided into local mode and APP mode; The local mode can adjust the sensitivity, 5 recommended scenes, and can be customized to add groove scenes, a total of 3 custom groove scenes can be added. The APP mode is not adjustable, and the phone needs to be turned on. The microphone detects the music.

Timing: Customize multiple times to perform on/off light actions;

Countdown: Define the countdown time to perform the on/off light action, and the light will automatically turn off when the countdown ends.

Power-off mode: The energizing reaction can set the state of the light after the energizing is applied

Set up: This interface can be bound with third-party language control, one-click execution and automation, group creation, device sharing and other functions

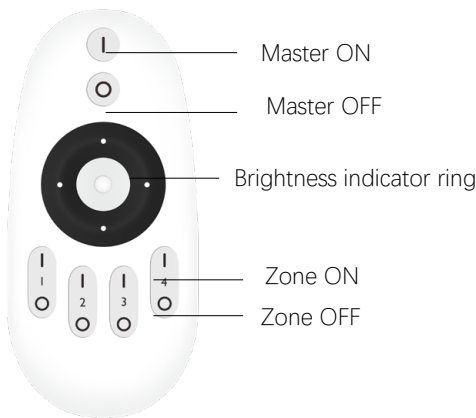
Description of the function of the remote control

Multi-function grouped Remote control

Main ON/OFF button **1 2 3 4** Grouping key Short press; Select the key function. Long press; Perform key functions.

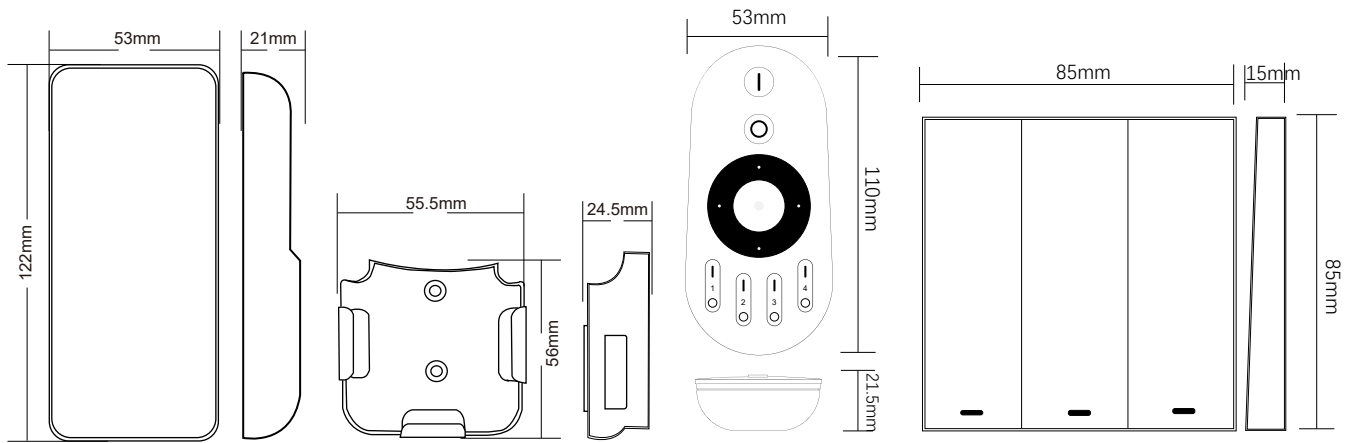


Grouped simple Remote control



Feel free to stick switches





Safety Precautions

1. The remote control is a precision electronic product, please do not use it in a humid or high temperature environment for a long time. If not in use for a long time, remove the battery and store it in a cool, dry place.
2. Do not use this device in a large area of metal or in an environment with strong electromagnetic waves nearby, otherwise it will seriously affect the control distance
3. Please check whether the input voltage of the constant voltage power supply meets the requirements of the controller, and check whether the connection of the cathode and anode is correct.
4. The working voltage is DC 5~24V, if the voltage is higher than 24V, the controller will be damaged.
5. Non-professional users cannot directly disassemble the controller, otherwise it may cause fire and electric shock.
6. The working temperature (Ta) is -20~60°C; Do not use the device in direct sunlight, humidity, or other high-temperature areas.
7. When the equipment load reaches 15A, the wire diameter must be more than 1.5 square millimeters
8. When the device load exceeds 10A, the connection cable from the DC port to the LED strip must be shorter than 40cm.
9. Please install the device in a good heat dissipation area.