

Knob panel controller & slim touch remote control



M601-DIM



M602-CCT



M603-RGB



M604-RGBW

Technical parameters

panel

Input voltage: DC12V-24V

Load current: MAX 6ACH

Operating temperature: -20°C~60°C

Size: L86xW86xH50(mm)

Weight (net): 120 grams

remote control

Input voltage: 3V

Operating frequency: 433MHZ

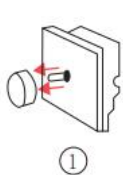
Long range: 30 meters

Operating temperature: -20°C~60°C

Size: L105xW51xH8 (mm)

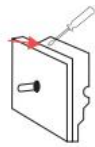
Weight (net): 29 grams

Installation tutorial



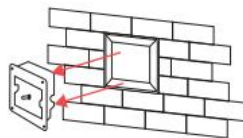
①

Remove the button



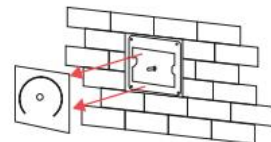
②

Remove the case



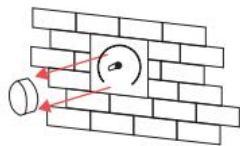
③

Screw into the 86*86 card slot



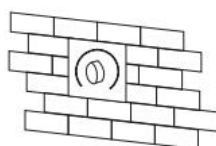
④

Install the enclosure



⑤

Install button



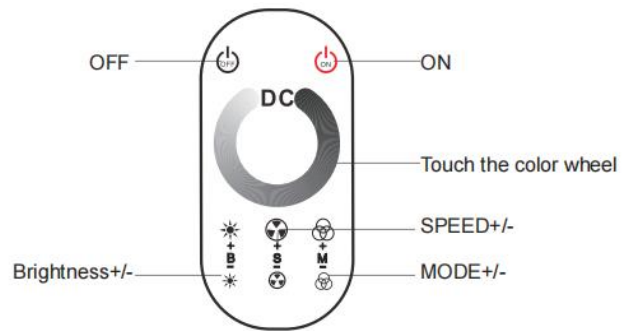
⑥

The installation is complete



Remote control bracket mounting

Product feature description



DIM

Short press: Turn ON/OFF the LED controller

Click the Rotate button: In the power-on state, click the Rotate button to adjust the brightness, ranging from 1~100

DIM remote control

Tap on the ON/OFF LED controller

Click on the brightness +/- panel display shows 1~100 to adjust the brightness Tap speed +/-

The panel display shows E1~E10, adjust the speed

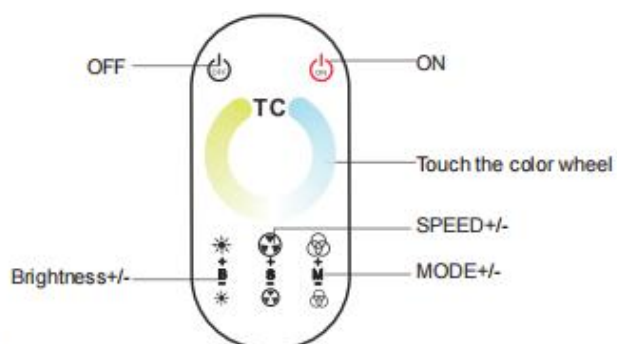
Click mode +/- The panel display shows H1~H3, and 3 modes can be adjusted

Schema table

H1	White light flashes
H2	The white light is getting brighter and darker
H3	White light flashes

note:The speed is adjustable in the mode, and the brightness is adjustable

CCT



Short press: Turn on/off the LED controller

Click Rotate: In the power-on state, click Rotate to adjust the brightness, ranging from 1~100

Double click to rotate: Rotate to increase or decrease the color temperature, ranging from C1~C100

Remote control mode

Tap on the ON/OFF LED controller

Click the touch color wheel to adjust the color, the panel display shows C1~C100, adjust the color temperature

Click on the brightness +/- panel display shows 1~100 to adjust the brightness

Tap speed +/- The panel display shows E1~E10, adjust the speed

Click mode +/- The panel display shows H1~H12, and 12 modes can be adjusted

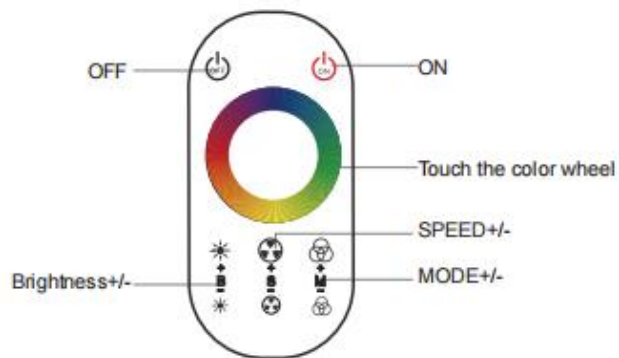
When powered on, short press the "ON" button on the remote control to quickly cool white, warm white, and neutral light

Schema table

H1	Warm white/neutral light/cool white jump	H7	Warm white/neutral light/cool white gradient
H2	Warm white jumping	H8	Neutral light fades brighter and darker
H3	Cold white jumping	H9	Warm white/neutral light/cool white flash
H4	Neutral light jumping	H10	Warm white flash
H5	The warm white gradually brightens and darkens	H11	Cool white flash
H6	The cold white gradually brightens and darkens	H12	Neutral light flashes

note: The speed is adjustable in the mode, and the brightness is adjustable

RGB



Short press: Turn on/off the LED controller

Click Rotate: In the power-on state, click Rotate to adjust the brightness, ranging from 1~100

Double click to rotate: Rotate to increase or decrease the color, ranging from C1~C100

Remote control mode

Tap on the ON/OFF LED controller

Click the touch color wheel to adjust the color, the panel display shows C1~C100, adjust the color

Click on the brightness +/- panel display shows 1~100 to adjust the brightness

Tap speed +/- The panel display shows E1~E10, adjust the speed

Click mode +/- The panel display shows H1~H23, and 23 modes can be adjusted

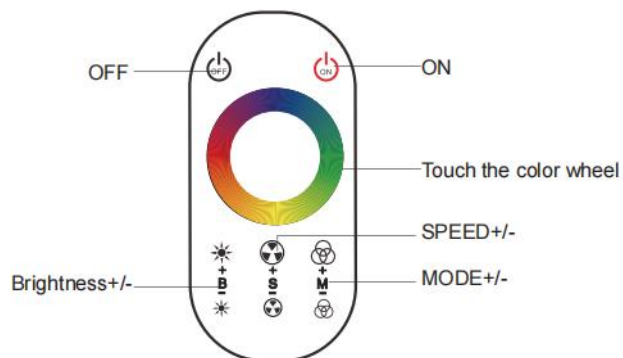
When the power is on, short press the "ON" button on the remote control to quickly turn white light

Schema table

H1	Three-color jump	H13	Yellow flashing
H2	Seven colors jump	H14	Purple flashes
H3	The three colors fade brighter and darker	H15	Cyan flashes
H4	The seven colors gradually brighten and darken	H16	White flashes
H5	Seven-color gradient	H17	The red fades brighter and darker
H6	Full-color gradients	H18	The green fades brighter and darker
H7	Red-green gradient	H19	The blue fades brighter and darker
H8	Blue-green gradient	H20	Yellow fades brighter and darker
H9	Blue-violet gradient	H21	The purple fades brighter and darker
H10	Flashing red	H22	The cyan color is getting brighter and darker
H11	Flashing green	H23	The white fades brighter and darker
H12	Flashing blue		

note:The speed is adjustable in the mode, and the brightness is adjustable

RGBW



Short press: Turn on/off the LED controller

Click Rotate: In the power-on state, click Rotate to adjust the brightness, ranging from 1~100

Double click to rotate: Rotate to increase or decrease the color, ranging from C1~C100

Remote control mode

Tap on the ON/OFF LED controller

Touch brightness color ring: the panel display displays 1~100, adjust the brightness

Click on the brightness +/- panel display shows 1~100 to adjust the brightness

Tap speed +/- The panel display shows E1~E10, adjust the speed

Click mode +/- The panel display shows H1~H27, and 27 modes can be adjusted

When the power is on, short press the remote control "ON" to quickly mix the white light/w

Schema table

H1	Tri-color W strobe	H8	Blue-green gradient jumps
H2	Seven-color W strobe	H9	Red and blue gradient jumping
H3	The tricolor W fades into light and dark	H10	W strobe
H4	Seven colors w fade brighter and darker	H11	Red strobe
H5	Red, yellow and blue gradient	H12	Green strobe
H6	Red, yellow, and green gradients	H13	Blue strobe
H7	Red-green gradient jumps	H14	Yellow strobe

H15	Purple strobe	H22	The blue beats and fades brighter and darker
H16	Cyan strobe	H23	Yellow beats and fades brighter and darker
H17	Mix white strobe	H24	The purple beats and fades brighter and darker
H18	Mix white W strobe	H25	The cyan beating gradually brightens and darkens
H19	W fades brighter and darker	H26	Mix white beats
H20	The red beats and fades brighter and darker	H27	Mix white W beats
H21	The green beats and fades brighter and darker		

Match & Cancel



Pair codes

Press and hold "B+" to match the code within five seconds of power-off and power-on, and the white light flashes three times to match the code successfully

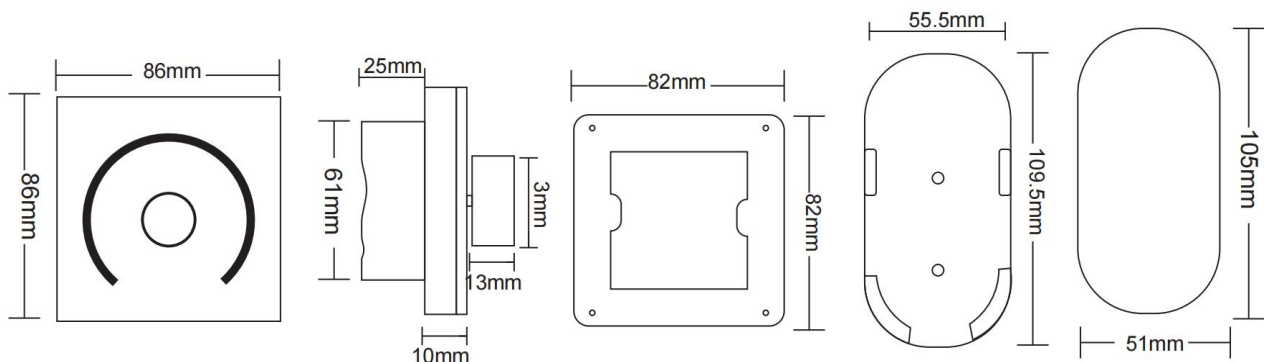
#Step 1

Elimination code

Press and hold "B-" within five seconds of power-off and power-on, and the white light flashes three times to cancel the code successfully

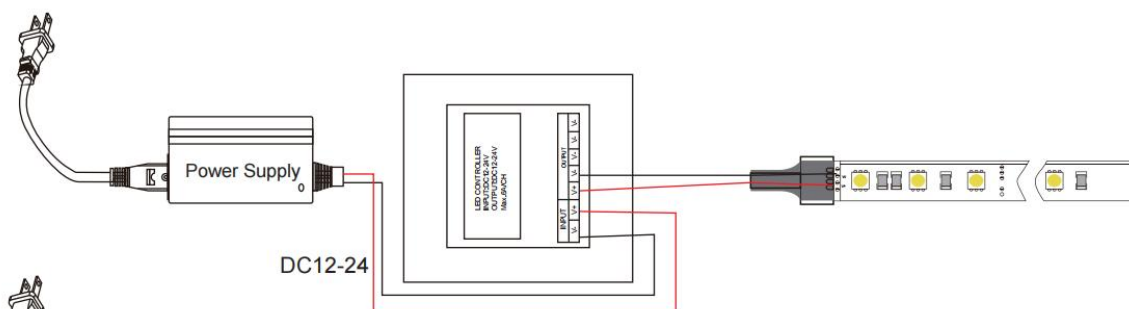
#Step 2

Product dimensions

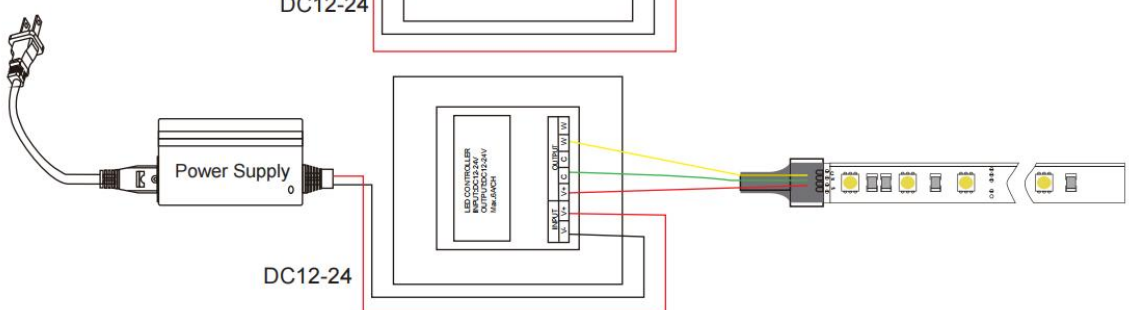


Product wiring

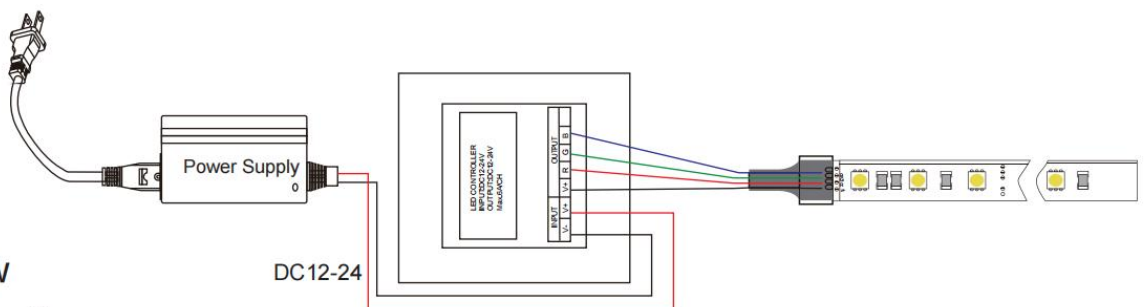
DIM



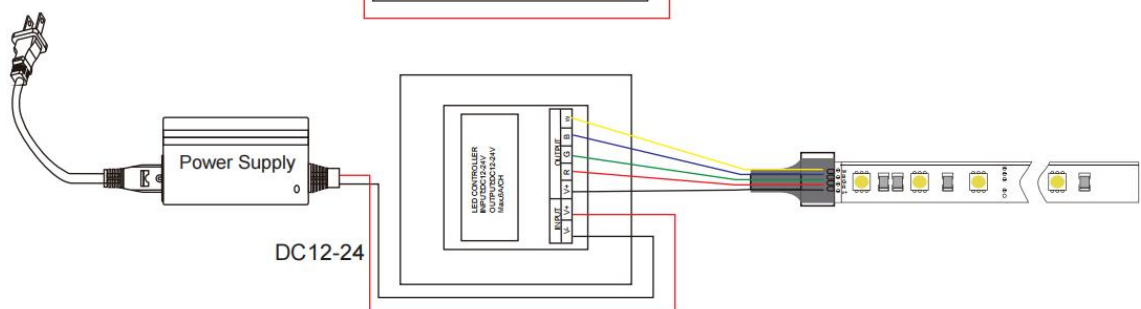
CCT



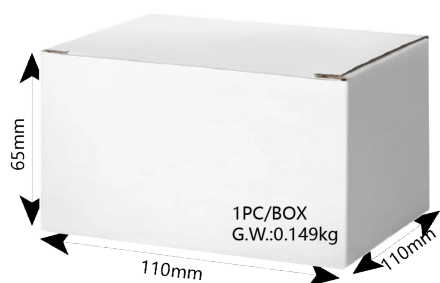
RGB



RGBW



Product packing information



parameter	size/cm	G.W.:KG
1 个	11*11*6.5	0.149
1 箱 (50 个)	55*55*13	8

Installation precautions

1. This product should be debugged and installed by professionally qualified personnel.
2. This product cannot be waterproof, it is necessary to avoid sun and rain, if it is installed outdoors, please use a waterproof box.
3. Good heat dissipation conditions will prolong the service life of the LED controller, please install the product in a well-ventilated environment.
4. Please do not install and use such products in lightning and thunder, strong magnetic field or high voltage occasions.
5. Please check whether the output voltage of the LED power supply used meets the requirements of the product voltage range.
6. The diameter of the wire used must be enough to load the LED lamp connected, and ensure that the wiring is firm, so as to avoid the wire overheating or poor contact triggering accidents.
7. Before power-on and commissioning, make sure that all wiring is correct to avoid damage to the lamps due to wiring errors.

After-sales service

1. Our LED controller products provide lifelong technical support and warranty services:

Free warranty: This product has quality problems within one year from the date of purchase, and our company will give free repair or replacement service.

Paid warranty: Products that exceed the free warranty period will be charged a certain cost of maintenance materials.

2. The following situations are not covered by the free warranty or replacement service:

Man-made damage such as overvoltage, overload, improper operation, etc.

Any wiring errors, flooding (non-waterproof products) and unauthorized repairs.

Any serious damage or serious deformation of the shape due to transportation, knocking, etc.

The shape of the product is severely damaged or deformed.

Damage caused by natural disasters and force majeure causes, such as earthquakes, floods, fires, etc.

3. The company's maximum responsibility for the factory products is to replace the same model and quantity of products.

4. In order to speed up the timeliness of repair or replacement, please indicate the fault phenomenon, the use environment, and the operation done when the fault occurs, so as to ensure that the maintenance situation is dealt with quickly.