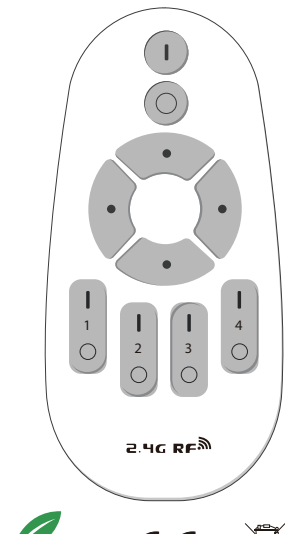


# AI-FUTURE | 4-Zones Remote



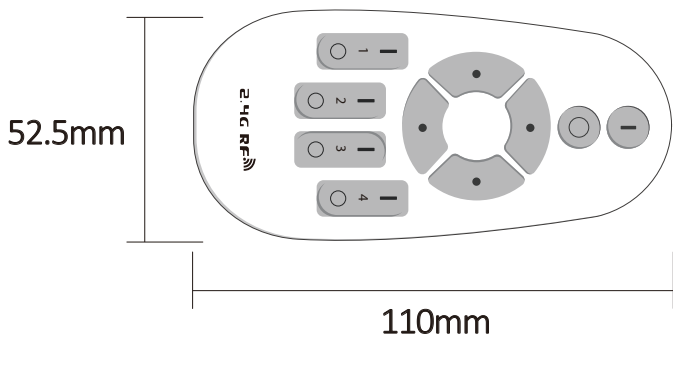
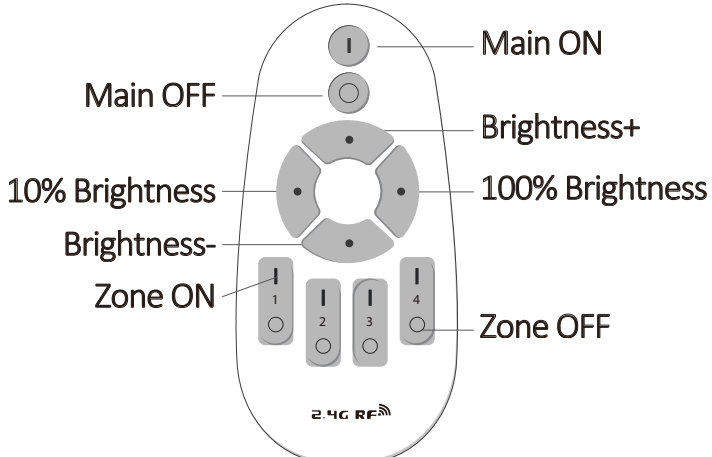
RoHS CE V1

## Product Features

- Dim Brightness
- Invidued 4-Zone Group Lighting Separately..

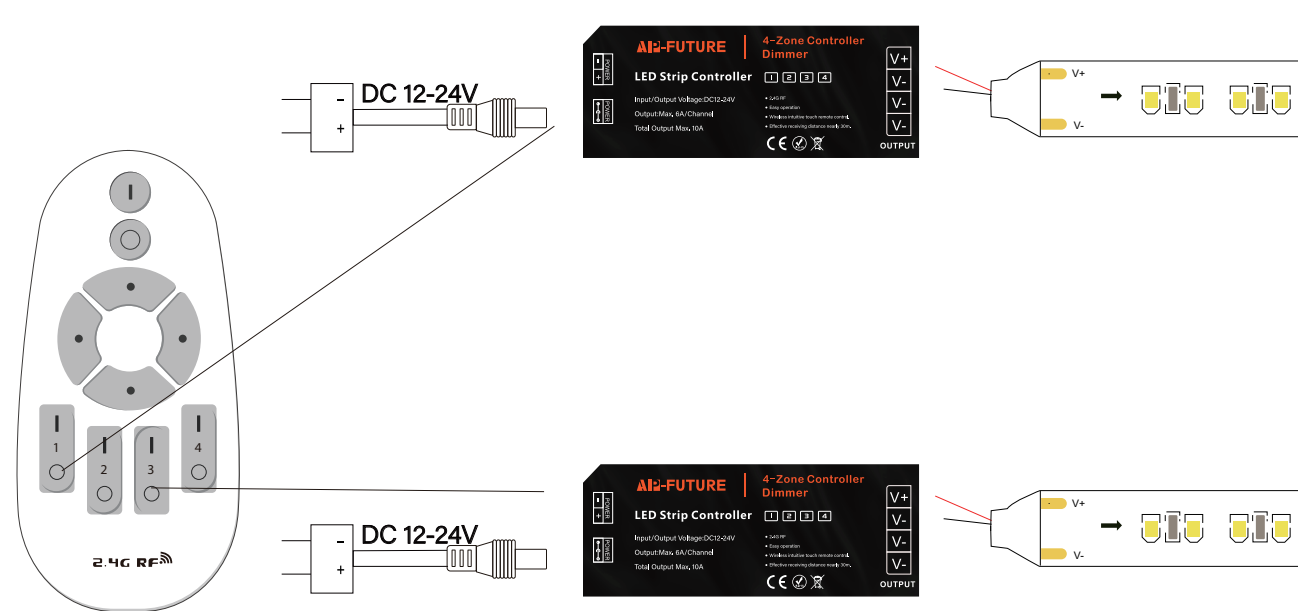
## Technical Parameters:

- TX Frequency: 2.4GHz
- Operate Voltage: 3V (AAA\*2PCS)
- Control Distance: 30m
- TX Power: 6dBm
- Standby Power: 20uA
- Modulate Method: GFSK
- Working Temp: -20°C ~ 60°C

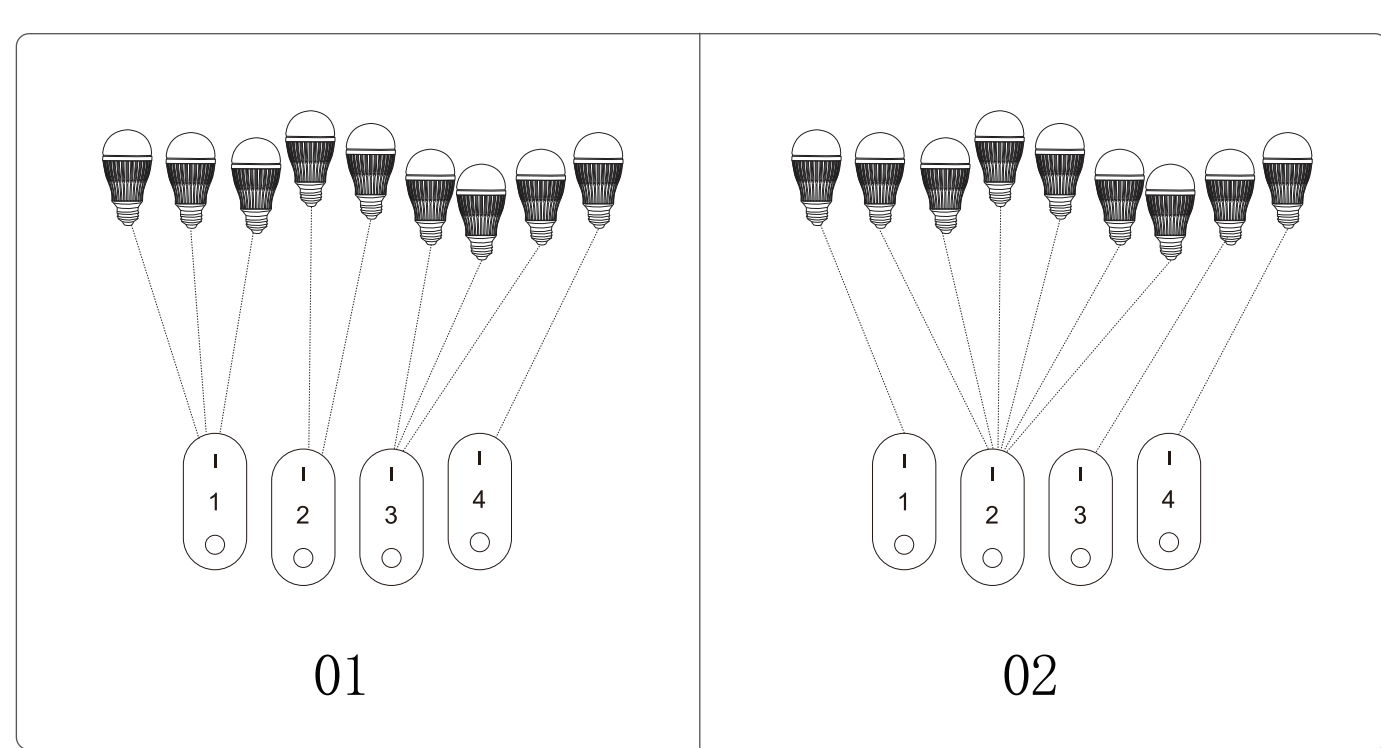


## Connection diagram:

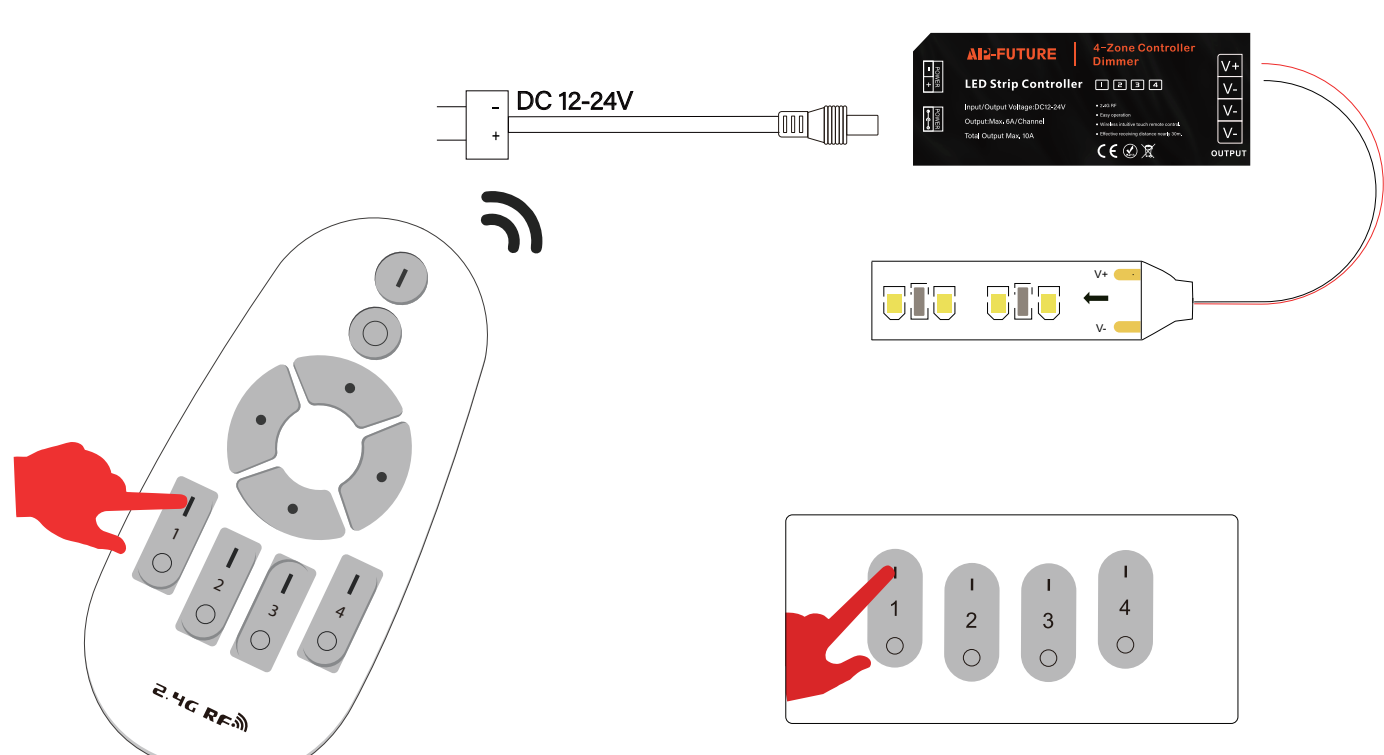
(1) One Remote to 4 Zones



(2) Each Zone can code with multiple Receivers

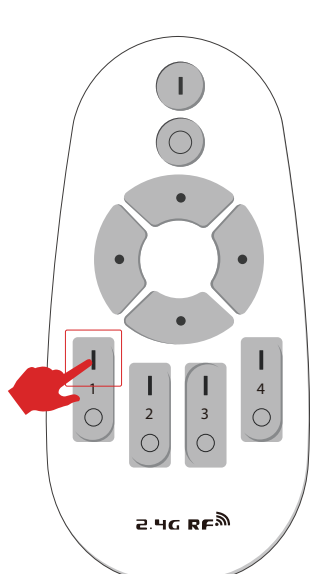


## Pair and De-pair Instructions

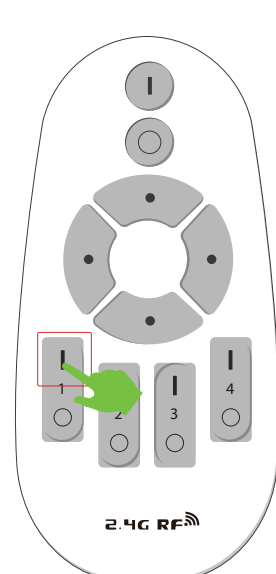


**Pair codes:** Within 5 seconds after the controller completes power-off and power-on, press the "power on button for any group", if the LED light connected to it flashes 3 times, it means that the controller has been successfully matched with the group, and the control of the group of devices can be successfully executed.

**Decoding:** Within 5 seconds after the controller is powered off and powered on, press the "Zone Group Power on Button" to be decoded, and if the controller's LED flashes 4 times, the controller decodes successfully



Combine Buttons for Pairing



Combine Buttons for De-pair

## Zone Control Functions:

Press a "Zone ON" button, then all the Receivers paired into this Zone, will be controllable:

Brightness Dim

All the Receivers are sync controlled with light color and brightness

## Application:



## Warning:

- 1, Do NOT expose the device in moisture.
- 2, Keep the device OUT from high temperature.
- 3, Do NOT mix the different Batteries into the Device.
- 4, Do NOT mix the New and Old Batteries into the Device.
- 5, Replace the Batteries when its power is low.